

ADAM 5

step by step





Prepare surfaces before measurement. Use **CP 015** silicone remover or cloth soaked with thinner to rinse surfaces. If the surface is damaged or slightly scratched, you can polish place of measurement with **EASY** paste in a sachet.



Turn on the device while holding down side button. After starting the device select **Job List**.



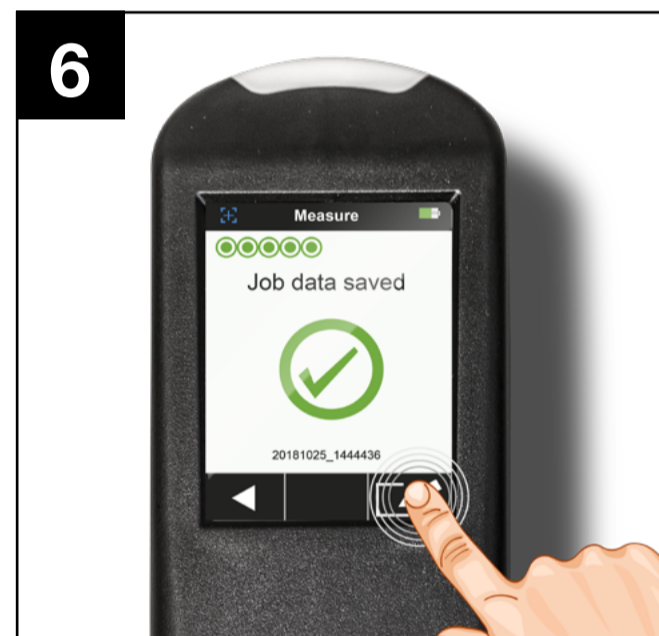
Touch **Add New Job**. Three contact points will appear on a screen. Place the device in the place of measurement. Three green points of contact indicate readiness to measure.



There are two measuring buttons, one on the touchscreen panel, the other on the side of the device. Make a measurement by positioning the device on a flat surface. Contact indicators help you to perform the measurement correctly.



During the measurement, make sure that the device stays still. Do not interrupt the process during the measurement. Make measurements in different places to make the result as reliable as possible.



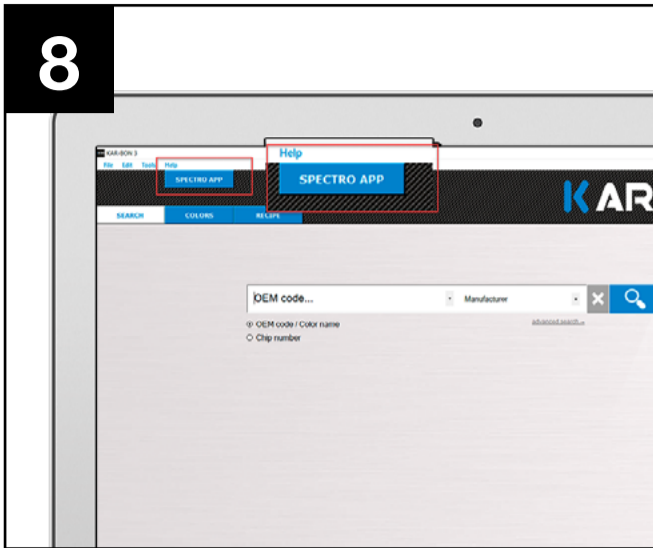
After completing an individual job you can assign an individual name. Then you can take further measurements. **ADAM 5** can store up to 30 jobs.



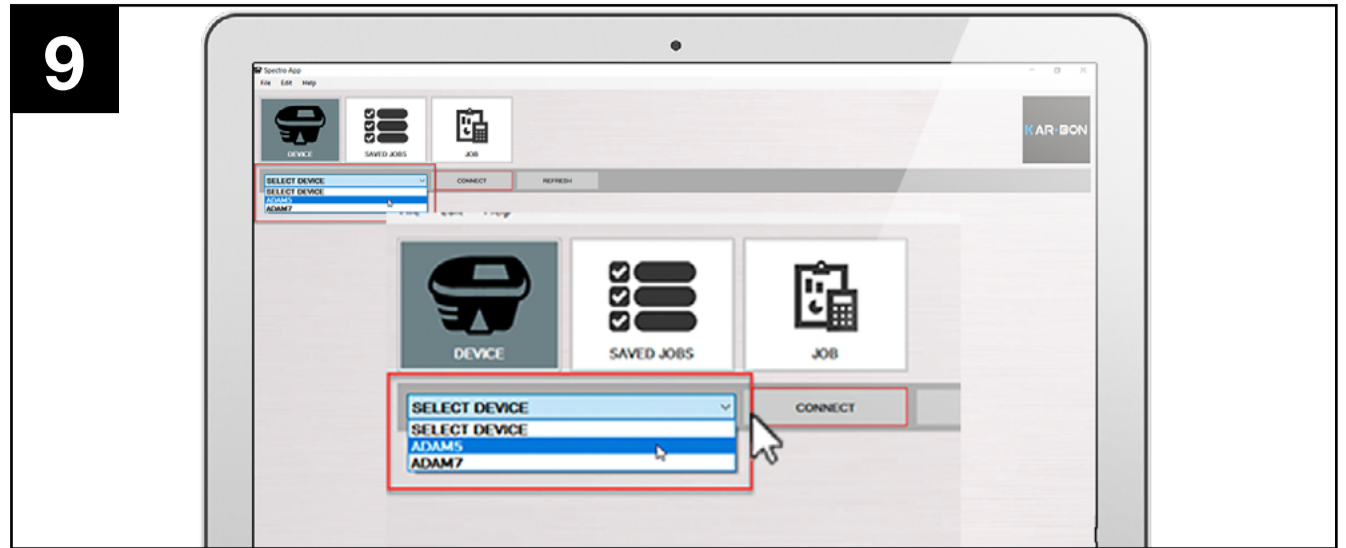
The possibility of giving an individual name (model, color number, etc.) makes it easy to find a Job while working in a recipe software. **NOTE: The list of Jobs is arranged alphabetically.**



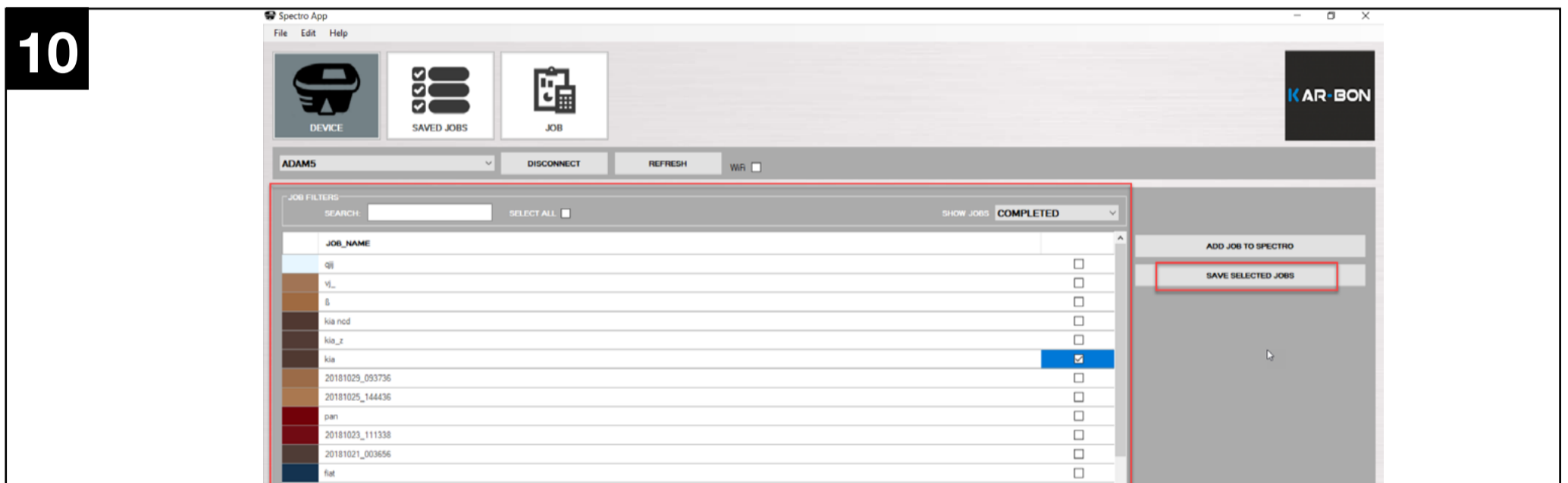
Connect the spectrophotometer to the computer using the included USB cable. You can also connect spectrophotometer by using WiFi (more information in the User's Guide).



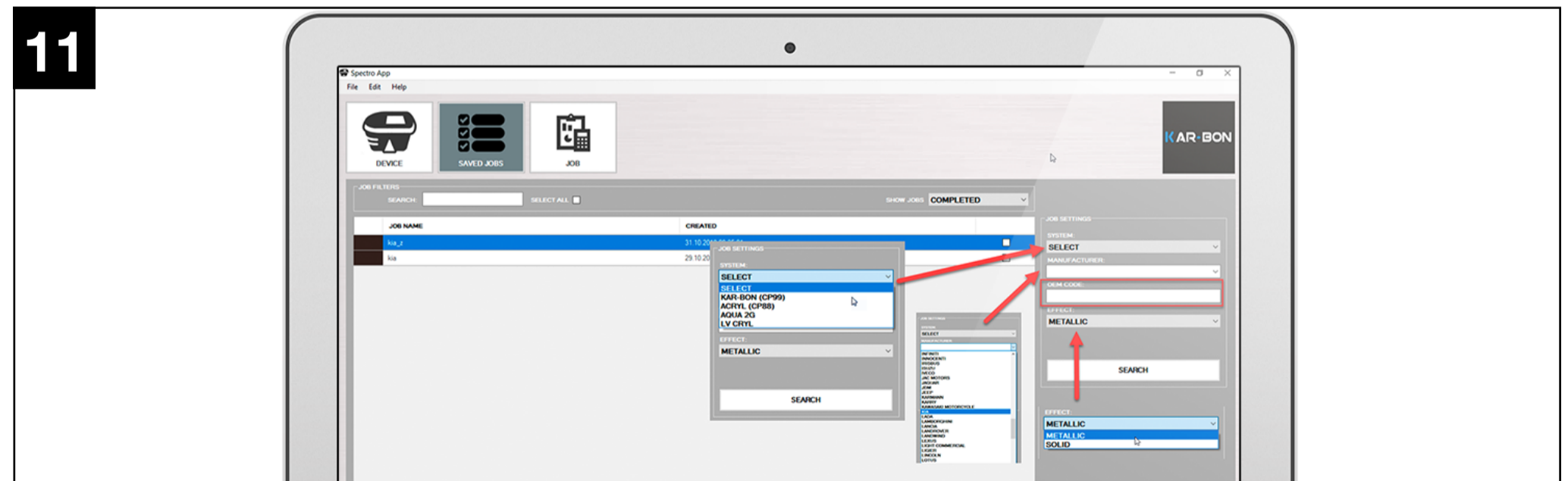
8 Start the **Kar-Bon** recipe software. Click on the **SPECTRO** icon.



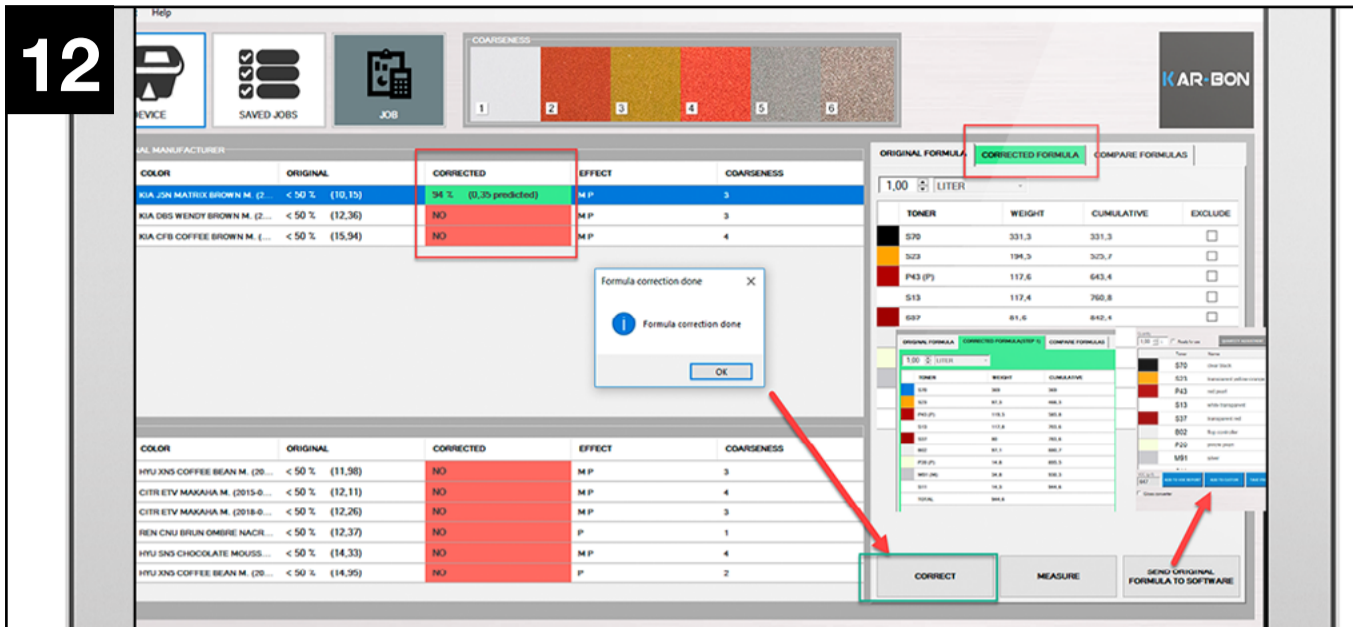
9 After launching the **SPECTRO** window, select device type from the drop down list. Later click **CONNECT**.



10 Check the list of your jobs (you can select more than one Job) - select them and then click **SAVE ALL JOBS** . At this point you can also delete selected Jobs from the spectrophotometer memory.



11 To find the best matching recipes from the database, select from the drop down list **SYSTEM** and specify information about the measured color, whether it is solid or metallic (**EFFECT**). The candidate's search time is shortened, if we suggest the car's brand (**MANUFACTURER**) or **OEM CODE** from the nameplate - this is not necessary.



Choose from the list the color you want to be corrected and click on the **'CORRECT'** button. Information about the color matching degree is expressed as a percentage - it will make your choice easier. After correction of the recipe, click - **SEND CORRECTED FORMULA TO SOFTWARE**.

Prepare the spray test mix.



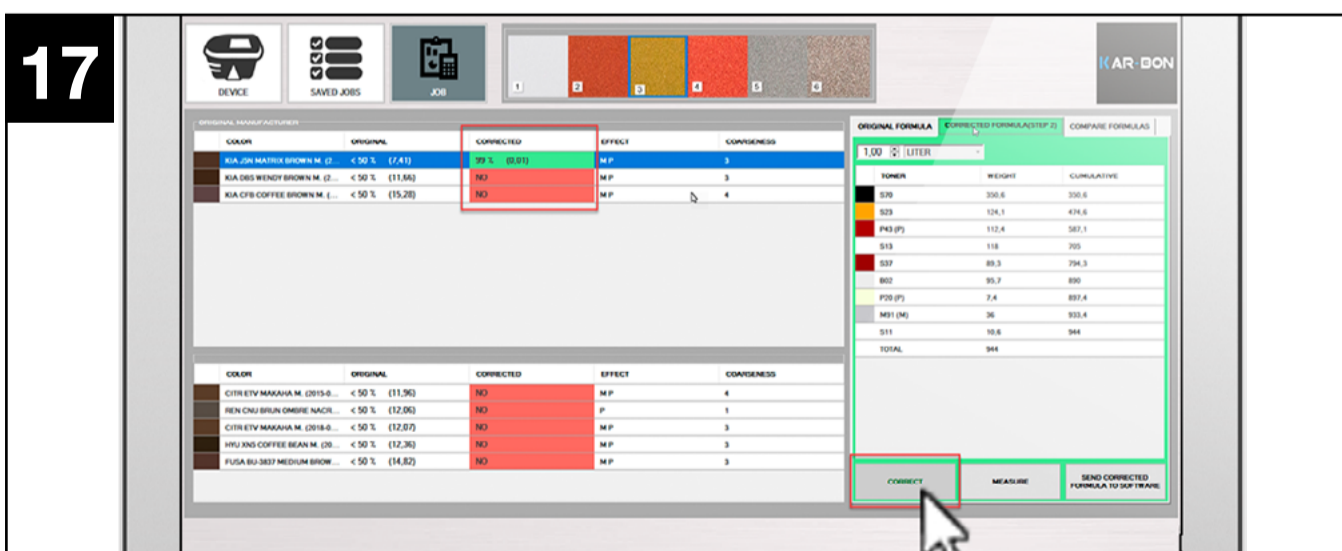
Perform a color spray test after the first correction.



Select the **MEASURE** button on the screen with first correction results to go directly to the spectrophotometer measurement process.



Perform the measurement as in points 4 and 5.



After loading the result, select **CORRECT** to perform the second step in the recipe correction. You can send the recalculated recipe to the recipe software for a second test spray.



Prepare the mixture for color matching test according to the recalculated recipe. If the end result is satisfying - job is completed. The process can be repeated any number of times.